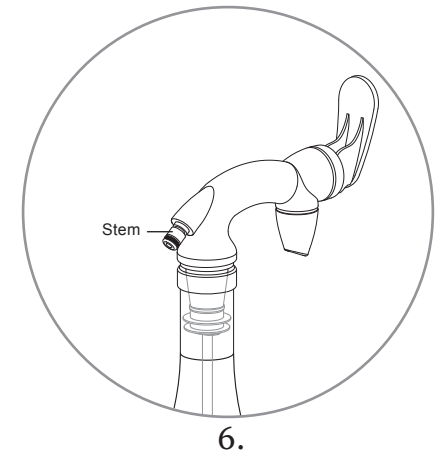
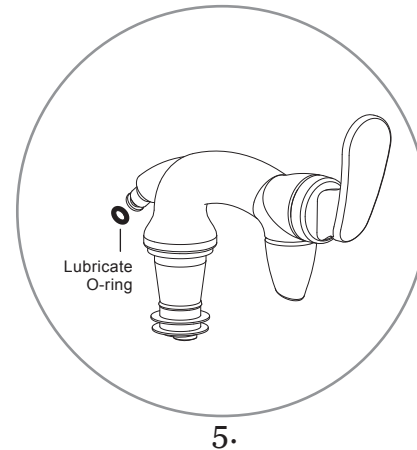
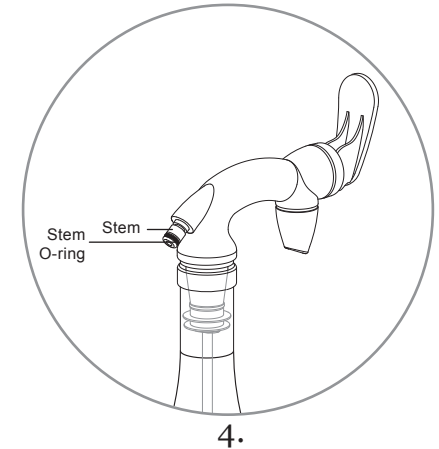
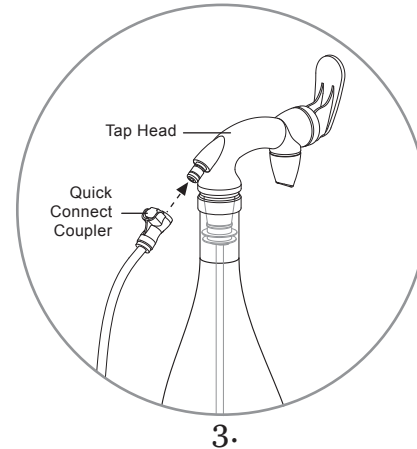
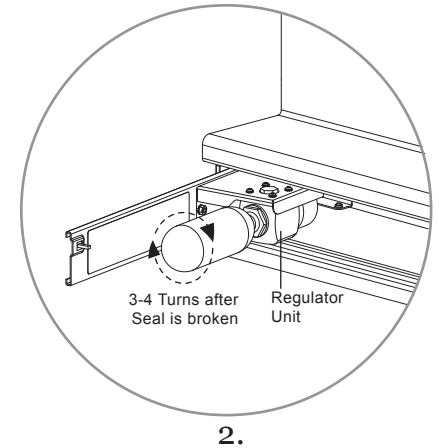
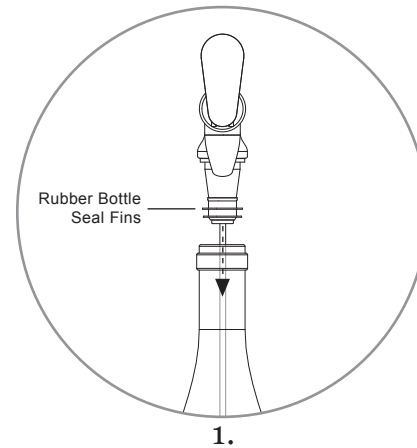


ISSUE

My Wine Saver PRO® is leaking argon.

If your Wine Saver PRO® is leaking argon address the issue immediately to conserve as much gas as possible. The following steps will guide you through checking the most common sources of leaking argon.

1. Ensure Tap Head assembly is fully seated in bottleneck and the rubber bottle seal fins are not scratched or damaged. In some small bottlenecks the system's pressure can push the Tap Head assembly up slightly which may allow argon to escape.
2. Ensure Argon Gas Cylinder is screwed in tightly to the Regulator Unit. To fully tighten, after feeling the seal break continue to tighten 3 to 4 turns.
3. Ensure Quick Connect Coupler is fully seated on Tap Head assembly. When fully connected you will hear a click from the metal button engaging on the stem.
4. Ensure Quick Connect Coupler Stem and Stem O-ring on Tap Head assembly are clean and free of possible damaging debris.
5. Ensure O-ring on Tap Head assembly is lubricated. If dry, lubricate with a small amount of common vegetable oil.
6. Ensure Quick Connect Coupler Stem on Tap Head assembly is not cracked or damaged in any way.



ISSUE

My Wine Saver PRO® is leaking argon. (continued)

7. Ensure all tubing and tubing connections are fitted correctly and have not been damaged or cracked. Tubing should be fully seated over all barbed fittings.

If argon continues to leak you may need additional help locating the source. To more accurately determine the location of your leak, brush all connection and fitting areas with soapy water and watch for bubbling, a sign of leaking argon.

